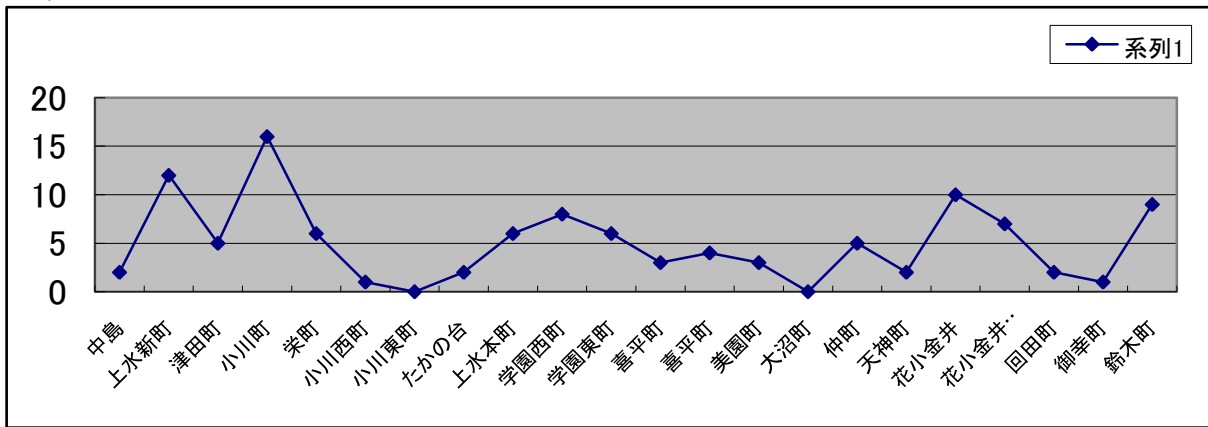
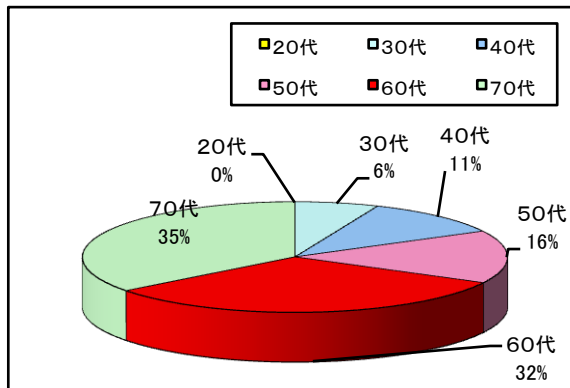


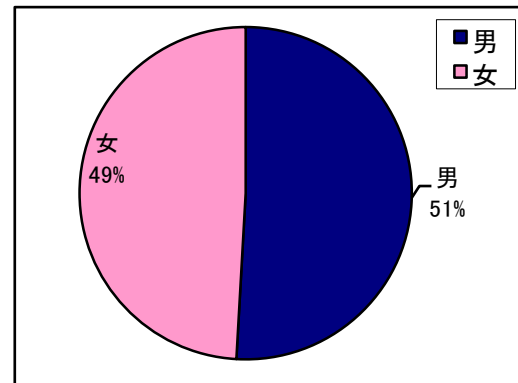
問1 町名別



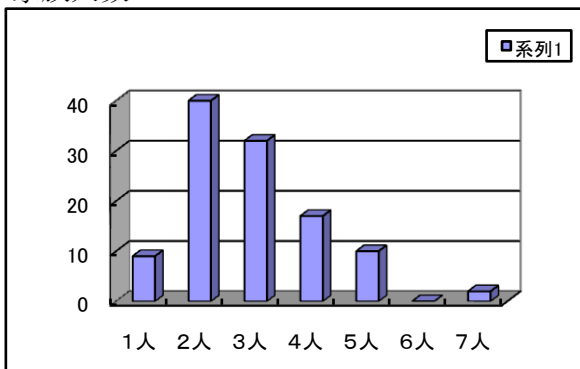
年齢



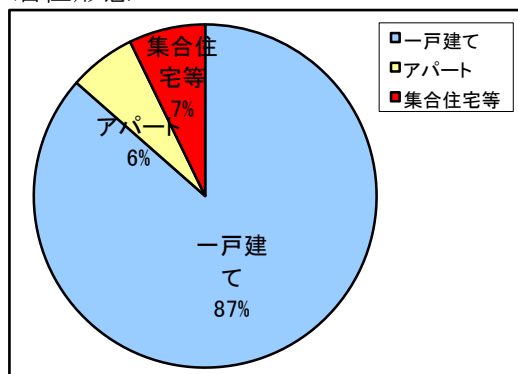
性別



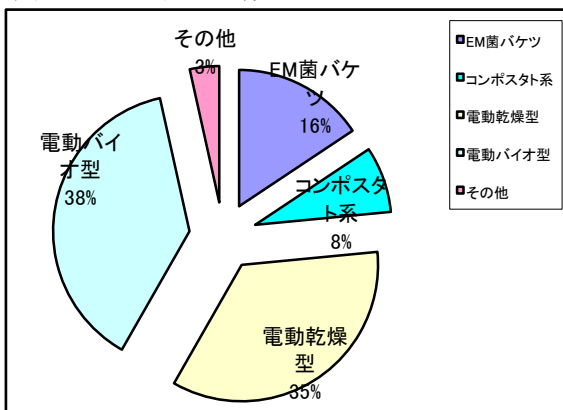
家族人数



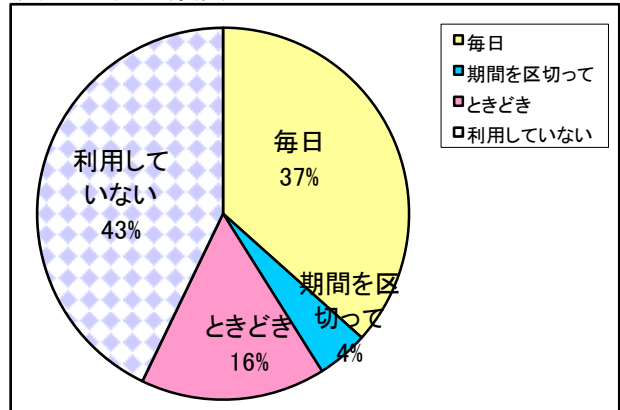
居住形態



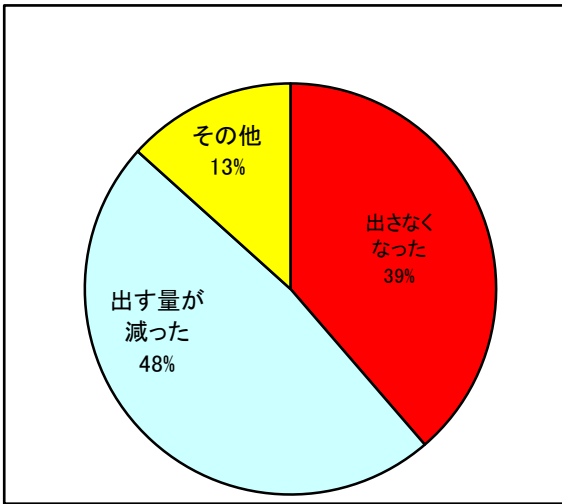
問2 生ごみ処理機のタイプ



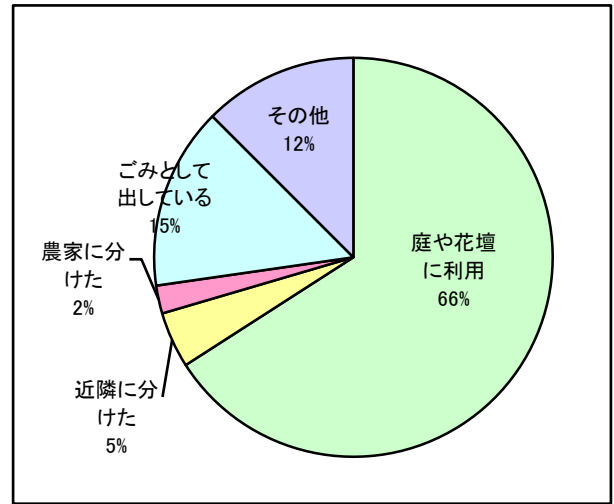
問3 使用頻度



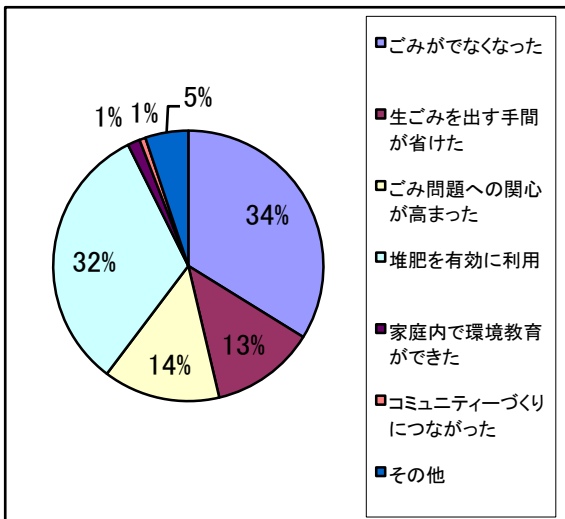
問4 生ごみの排出量



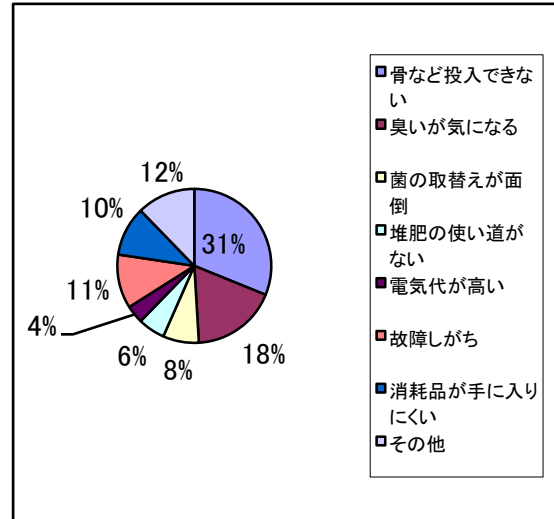
問5 残渣の利用方法



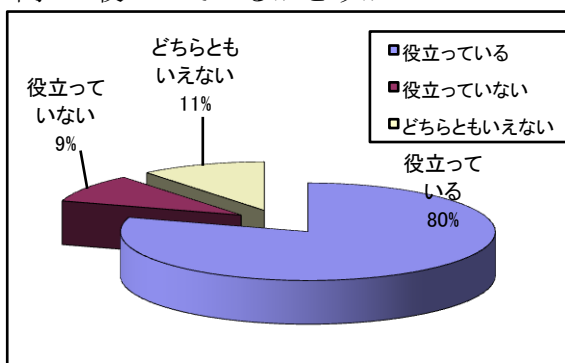
問6 長所



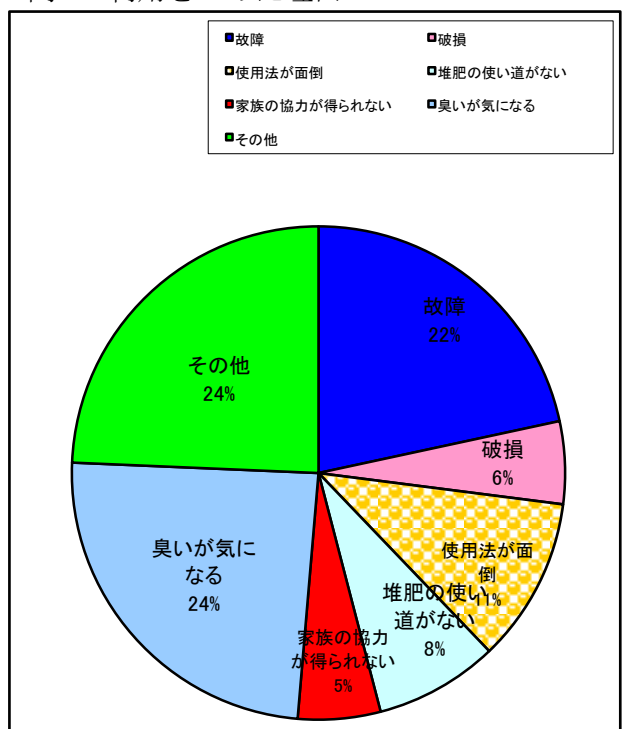
問7 短所



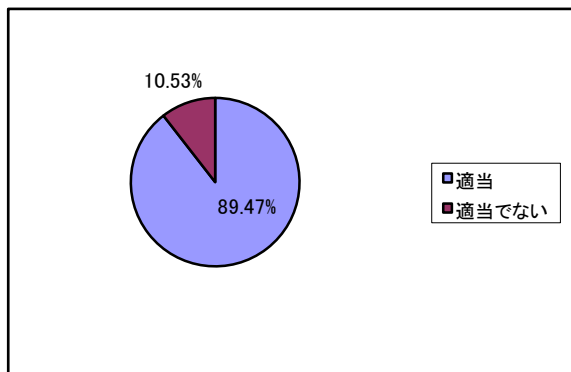
問8 役立っているかどうか



問9 利用を止めた理由



問10 補助金の補助率等



問11 補助金のPRについて

